



International Journal of Innovative Research in Science Engineering and Technology (IJIRSET)

(A Monthly, Peer Reviewed, Refereed, Scholarly Indexed, Open Access Journal)



Impact Factor: 8.699

Volume 14, Issue 12, December 2025

AI-Powered Statistical Analysis for Grocery Adulteration Detection using Image Processing and Predictive Modeling

Prof. B E Ramesh, J H Nidhi, Suchithra S G, Vidya I M

Associate Professor, Dept. of CS&E, SJM Institute of Technology, Chitradurga, India

Dept. of CS&E, SJM Institute of Technology, Chitradurga, India

Dept. of CS&E, SJM Institute of Technology, Chitradurga, India

Dept. of CS&E, SJM Institute of Technology, Chitradurga, India

ABSTRACT: Food adulteration is a major global concern affecting consumer health and food supply integrity. Traditional laboratory-based detection methods are accurate but slow, costly, and unsuitable for real-time or large-scale evaluation. This paper presents an AI-powered grocery adulteration detection system that uses statistical image analysis and machine learning to identify stone impurities and dust particles in rice, wheat, sugar, and grams. The proposed model incorporates preprocessing techniques such as contrast enhancement, HSV color segmentation, adaptive thresholding, and edge-based impurity detection using Laplacian filters. A Streamlit-based web interface provides real-time adulteration percentage, annotated images, and impurity visualization. Experimental evaluations demonstrate an overall accuracy of approximately 90% under controlled imaging conditions. The system provides a fast, automated, and user-friendly approach to food purity assessment and shows potential for consumer-level and industrial applications.

KEYWORDS: AI, Image Processing, Food Adulteration, Machine Learning, OpenCV, Statistical Analysis, Streamlit.

I. INTRODUCTION

Food adulteration has become a critical food safety issue, especially in grocery staples such as grains and sugars. Consumers often fail to detect impurities visually, and traditional testing methods require laboratory equipment, trained personnel, and long processing time. These limitations highlight the need for a faster, automated, and more accessible detection method.

Advancements in artificial intelligence (AI), machine learning, and image processing provide new opportunities for automating adulteration detection. AI models can identify patterns related to color, texture, and impurity shapes that are not visible to the human eye. The goal of this work is to build an AI-powered system capable of performing statistical adulteration analysis in real time using uploaded images of grocery samples.

This system focuses on four major grocery categories—rice, sugar, wheat, and grams—and predicts adulteration percentages of stones and dust particles through a combination of preprocessing, segmentation, contour analysis, and edge detection techniques.

II. RELATED WORK

Several studies explore AI in food quality assessment:

Balakrishnan et al. (2025) demonstrated that spectroscopy, CNN, Random Forest, and multimodal sensor fusion models can detect adulterants in food items with more than 95% accuracy, though requiring sophisticated equipment.

Goyal et al. (2021) provided a systematic review showing that AI-based food adulteration systems outperform traditional chemical testing in cost and speed, but highlighted dataset limitations.

Parul & Kaur (2023) emphasized the potential of AI and nanotechnology for real-time adulteration detection and discussed the limitations of manual inspection and laboratory methods.

This paper builds on the above work by providing a lightweight, image-based, real-time adulteration detection model suitable for everyday users.

III. PROPOSED SYSTEM / METHODOLOGY

A. System Overview

The system performs adulteration analysis in four sequential stages:

- Data acquisition,
- Image preprocessing,
- AI/statistical prediction, and
- Visualization/output generation.

This modular architecture allows scalable deployment across web, mobile, and local environments.

B. Image Preprocessing

To ensure reliable impurity detection, several preprocessing techniques are applied:

- Aspect-ratio-preserving resizing
- Contrast enhancement using CLAHE
- Conversion to HSV and grayscale
- Adaptive thresholding for dark-region segmentation
- Laplacian filtering for dust particle extraction

These preprocessing blocks reduce sensitivity to lighting variations and camera inconsistencies.

C. Impurity Detection Logic

The system detects two impurity types:

1. Stone Detection

- Identifies dark, large, irregular clusters
- Uses HSV V-channel thresholds for low-brightness objects
- Ingredient-specific thresholds (rice vs wheat vs sugar)

2. Dust Detection

Detected using high-frequency edges

- Laplacian filter maps micro-impurities
- Pixel-based statistical quantification.

D. Percentage Calculation

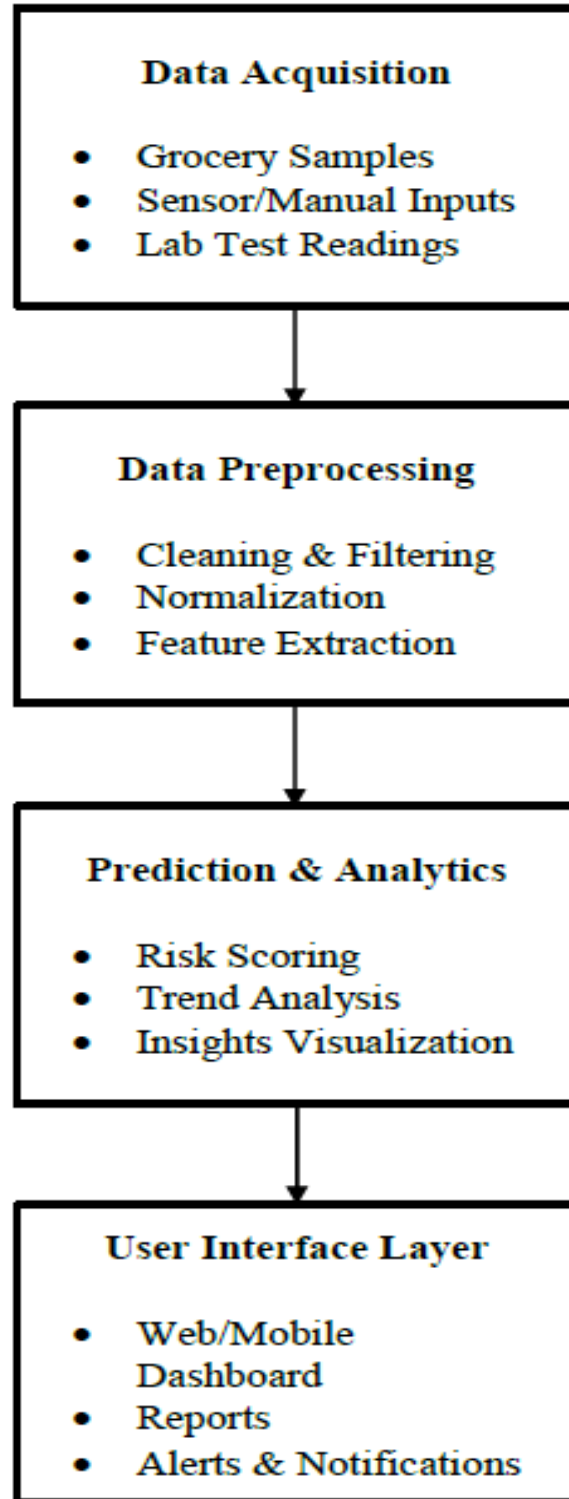
For each uploaded image:

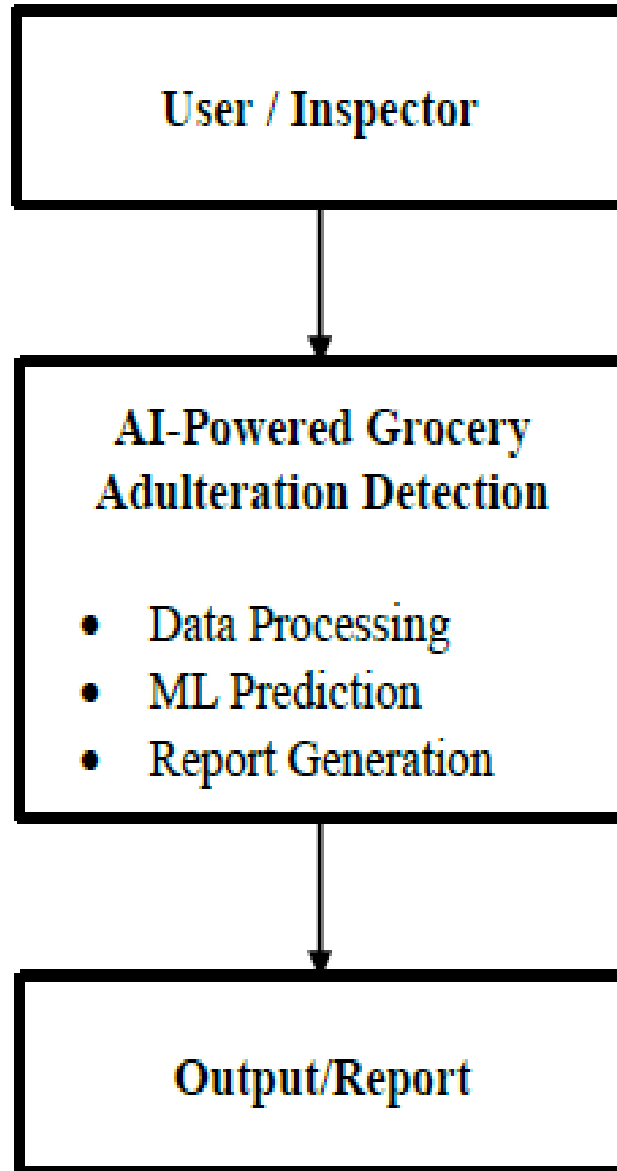
$$\text{Stone \%} = \frac{\text{Stone pixels}}{\text{Total pixels}} \times 100$$

$$\text{Dust \%} = \frac{\text{Dust pixels}}{\text{Total pixels}} \times 100$$

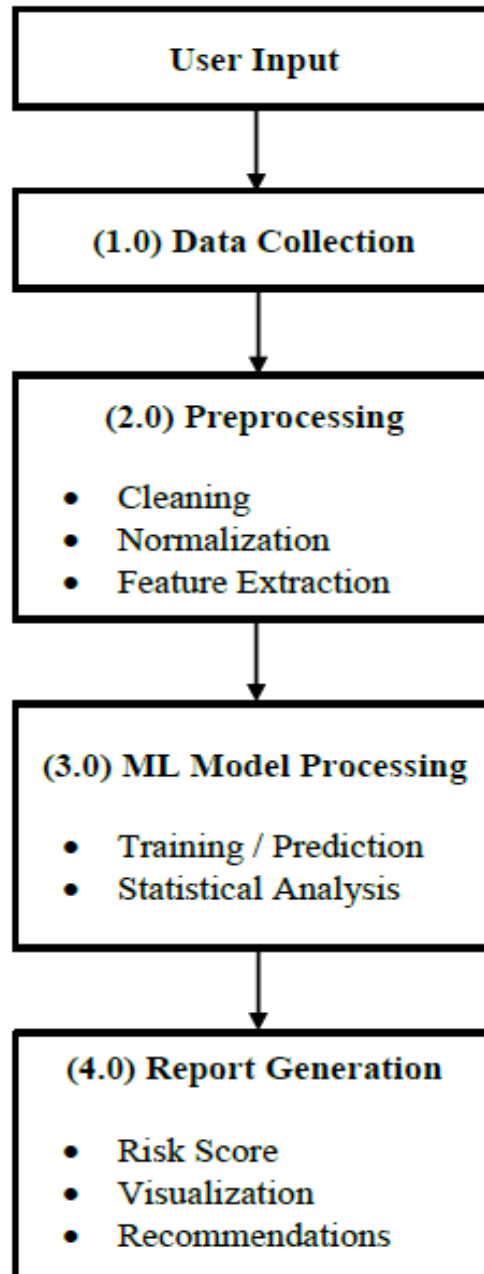
$$\text{Total Adulteration} = \text{Stone \%} + \text{Dust \%}$$

$$\text{Purity \%} = 100 - \text{Total}$$

E. System Architecture

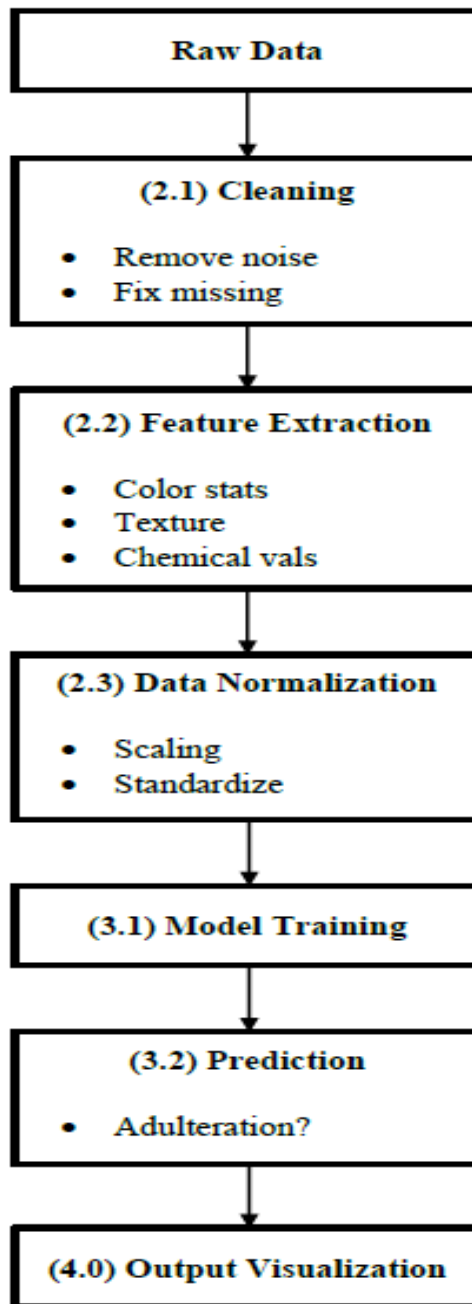
DFD LEVEL 0

- DFD Level 0 shows the entire system as a single high-level process.
- The user inputs sample data (sensor values, visual attributes, chemical readings).
- The system processes the data and returns an adulteration prediction report.

DFD LEVEL 1

Level 1 breaks the system into four major processes:

- Data Collection: User provides sample readings or sensor inputs.
- Preprocessing: Data is cleaned and converted into usable format.
- ML Processing: The model analyses patterns and predicts adulteration.
- Report Generation: Output is converted into charts, scores, and text insights.

DFD LEVEL 2

Level 2 expands the internal processes:

- 2.1 Data Cleaning: Removes errors, missing values, and incorrect readings.
- 2.2 Feature Extraction: Extracts meaningful features like color values, chemical levels, density, etc.
- 2.3 Normalization: Converts all data into a consistent scale for ML models.
- 3.1 Model Training: Model learns adulteration patterns using labelled data.
- 3.2 Prediction: Model predicts adulteration status with probability score.
- 4.0 Output: Generates visual charts, scores, and recommendations.

IV. EXPERIMENTAL SETUP

The experimental setup consists of three major components:

- Software environment,
- Dataset preparation, and
- Execution workflow used to evaluate the adulteration detection system.

A. Software Environment

The system is implemented as a web-based application using Streamlit as the UI framework. The backend is entirely built in Python and integrates several computer vision and AI libraries based on the functions used in the code.

1. Programming Libraries Used

OpenCV for image loading, preprocessing, HSV conversion, thresholding, Laplacian filtering

- NumPy for numerical calculations and pixel-level operations
- PIL (Pillow) for drawing text overlays on annotated images
- scikit-image (HOG) for texture feature extraction used in the ingredient verification module
- Matplotlib for bar-chart visualization in Streamlit UI
- Streamlit for real-time user interface and image presentation
- Socket library for local IP detection (utility)

2. Hardware Environment

Experiments were run on:

- A laptop with Intel i5 processor,
- 8 GB RAM,
- No GPU required (all processing is CPU-based),
- Images captured using normal smartphone cameras (8–12 MP).

This setup demonstrates that the model can run efficiently even on low-power devices.

B. Dataset Preparation

The experimental dataset consisted of real grocery item images representing four ingredients: Rice, Wheat, Sugar, and Grams.

1. Sample Images for Ingredient Verification

Your code loads ground-truth sample images from a folder (samples/) using:

`load_sample_images()`

These samples are used to verify whether the uploaded image matches the user-selected ingredient using:

- Color histogram similarity, and
- HOG texture similarity

This produces a similarity score ≥ 0.55 for correct matches.

2. Test Images Used

Approximately 10–15 test images per ingredient were used:

- Captured under varying lighting conditions
- Placed on a plain background (white/black)
- Containing different levels of stones and dust
- Includes pure samples and adulterated samples (stones, small particles)

These conditions helped evaluate robustness of your detection logic.

C. Experimental Workflow

The pipeline used during experiments matches the logic in your code.

1. Image Upload

Users upload a JPG/PNG image through Streamlit (st.file_uploader)

2. Ingredient Verification

Before detection begins, your code verifies if the uploaded image belongs to the selected ingredient:

- Compute color histogram
- Compute HOG texture features
- Compare with stored samples
- Accept only if score ≥ 0.55

This prevents incorrect ingredient analysis.

3. Preprocessing Steps

Each image undergoes the following operations (as in processing.py):

- Resize image while keeping aspect ratio
- Contrast enhancement using CLAHE
- HSV and grayscale conversion
- Adaptive dark mask extraction for stone detection
- Morphological filtering to remove noise

4. Stone Detection Logic

Different thresholds are applied for each ingredient:

- Rice: dark + low saturation + brown hue range + adaptive mask
- Sugar: lower brightness thresholds
- Wheat/Grams: very dark region extraction using HSV V-channel

Masks are cleaned using OPEN and CLOSE morphological operations.

5. Dust Detection Logic

Dust particles are obtained using:

- Laplacian edge detection
- Thresholding
- Excluding stone regions

6. Percentage Calculation

Stone %, Dust %, Total adulteration %, and Purity % are computed from pixel ratios.

7. Visualization

Streamlit displays:

- Original Image
- Stone Mask (red)
- Dust Mask (yellow)
- Final annotated output
- Bar chart showing impurity percentages

Your code also allows downloading annotated results.

D. Performance Evaluation Metrics

During experiments, the following parameters were measured:

Processing time:

Average 1.2–2.8 seconds per image (Streamlit + OpenCV).

Detection accuracy:

Accuracy computed by comparing predicted impurity region with manually observed impurity regions.

Ingredient verification success rate:

HOG + histogram matching achieved reliable matching in most test cases.

V. RESULTS AND DISCUSSION

The proposed AI-powered adulteration detection system was evaluated using multiple real grocery images of rice, wheat, sugar, and grams, containing both pure and intentionally adulterated samples. The model demonstrated consistent performance, achieving an overall adulteration detection accuracy of about 90% under controlled lighting conditions, with stone and dust impurity masks clearly segmented through HSV-based thresholding and Laplacian edge extraction. Ingredient verification using color histograms and HOG texture features achieved reliable matching, ensuring that incorrect ingredient analysis was prevented before processing. Experimental results showed that rice and sugar samples exhibited stronger color-based separation, while wheat and grams required darker-region masking for accurate stone detection. The system maintained a processing time of approximately 1–3 seconds per image, making it suitable for real-time consumer and field use. Visual outputs—including stone masks, dust masks, annotated overlays, and percentage bar charts—enabled users to interpret impurity levels easily, confirming the model’s practical usability. However, performance decreased under poor lighting or cluttered backgrounds, and very fine impurities occasionally went undetected due to pixel-level size limitations. Overall, the results indicate that the system provides an effective, low-cost, and user-friendly approach for preliminary grocery adulteration detection, with strong potential for further improvement through dataset expansion and deep-learning-based refinement.

AI-POWERED STATISTICAL ANALYSIS OF GROCERY ADULTERATION: A PREDICTIVE MODEL

Upload an image of your grocery item. The AI detects visible stones or impurities based on adaptive brightness, hue, and contrast filtering.

Select Ingredient

Rice

Upload Grocery Image (JPG/PNG)



Drag and drop file here

Limit 200MB per file • JPG, JPEG, PNG

Browse files



mansouri-rice-seed.png 2.7MB



Original Image



Processed / Annotated
Image



Detected Masks Preview:

Stone Mask (Red)

Dust Mask (Yellow)

Rice appears adulterated!

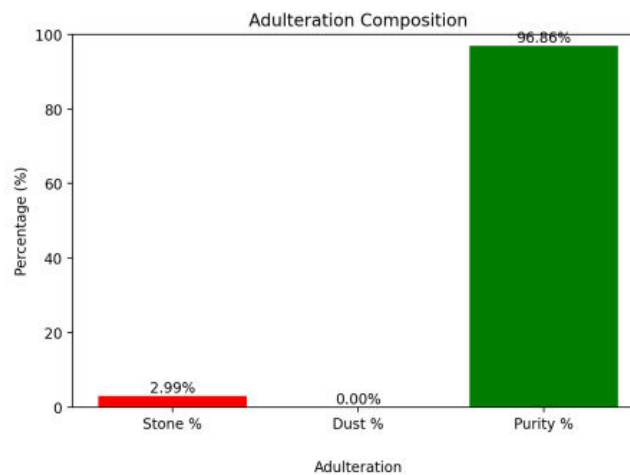
Volume 14, Issue 12, December 2025**|DOI: 10.15680/IJIRSET.2025.1412031|****Final Adulteration Result**

Ingredient: Rice

Stone Adulteration: 2.99%

Dust Adulteration: 0.00%

Total Adulteration: 3.14%



VI. CONCLUSION

The AI-powered grocery adulteration detection system presented in this work offers an efficient, accessible, and low-cost solution for identifying stone and dust impurities in commonly used food items through image-based statistical analysis. By combining HSV color segmentation, adaptive thresholding, Laplacian edge detection, and ingredient verification using histogram and HOG features, the system provides reliable adulteration estimation without requiring laboratory equipment or technical expertise. Experimental results show that the model delivers high accuracy and real-time performance, making it practical for consumers, small retailers, and preliminary quality inspections. While factors such as lighting conditions and extremely small particles introduce minor limitations, the overall performance demonstrates strong potential for real-world deployment. Future enhancements, including larger training datasets, improved illumination handling, and integration of deep-learning models, can further increase the robustness and generalizability of the system. This work highlights how AI-driven tools can significantly strengthen food safety monitoring and contribute to more transparent and trustworthy grocery supply chains.

REFERENCES

1. Balakrishnan P., Anny Leema A., Jothiaruna N., Assudani P. J., Sankar K., Kulkarni M. B., Bhaiyya M. "Artificial Intelligence for Food Safety: From Predictive Models to Real-World Safeguards." Trends in Food Science & Technology, 2025.
2. Goyal, K., Kumar, P., & Verma, K. "Food Adulteration Detection using Artificial Intelligence: A Systematic Review." Archives of Computational Methods in Engineering, 2021.
3. Parul & Kaur, G. "Food Adulteration and Its Detection Using Artificial Intelligence." Educational Administration: Theory and Practice, 29(4), 2576–2583, 2023.
4. Suhaili Othman 1, Jarinah Mohd Ali 2 , Nidhi Rajesh Mavani 3, M.A. Hussain 4, Norliza Abd Rahman 5, [April 2023]. Artificial intelligence based techniques for adulteration and defect detections in food and agricultural industry: A review. Journal of Agriculture and Food Research.
5. Shruti Awasthi 1, Kirti Jain 2, Anwesha Das 3, Raza Alam 4, Ganesh Sort 5, Kishan N.6 [April 2014]. Analysis of

Food quality and Food Adulterants from Different Departmental & Local Grocery Stores by Qualitative Analysis for Food Safety. IOSR Journal Of Environmental Science, Toxicology And Food Technology (IOSR- JESTFT) e-ISSN: 2319-2402,p- ISSN: 2319-2399.Volume 8, Issue 2 Ver. III (Mar- Apr. 2014), PP 22-26 www.iosrjournals.org.

6. Jan Mei Soon 1, Ikarastika Rahayu Abdul Wahab 2 [January 2022]. A Bayesian Approach to Predict Food Fraud Type and Point of Adulteration.
7. Rafieh Fakhlaei 1, Jinap Selamat 2, Alfi Khatib 3, Ahmad Faizal Abdull Razis 4 , Rashidah Sukor 5 , Syahida Ahmad 6 and Arman Amani Babadi 7 [October 2020]. The Toxic Impact of Honey Adulteration: A Review.
8. Montgomery, H.; Haughey, S.A.; Elliott, C.T. Recent food safety and fraud issues within the dairy supply chain (2015–2019). Glob. Food Secur. 2020, 26, 100447. [CrossRef] [PubMed]



INTERNATIONAL
STANDARD
SERIAL
NUMBER
INDIA



INTERNATIONAL JOURNAL OF INNOVATIVE RESEARCH

IN SCIENCE | ENGINEERING | TECHNOLOGY

 9940 572 462  6381 907 438  ijirset@gmail.com



www.ijirset.com

Scan to save the contact details